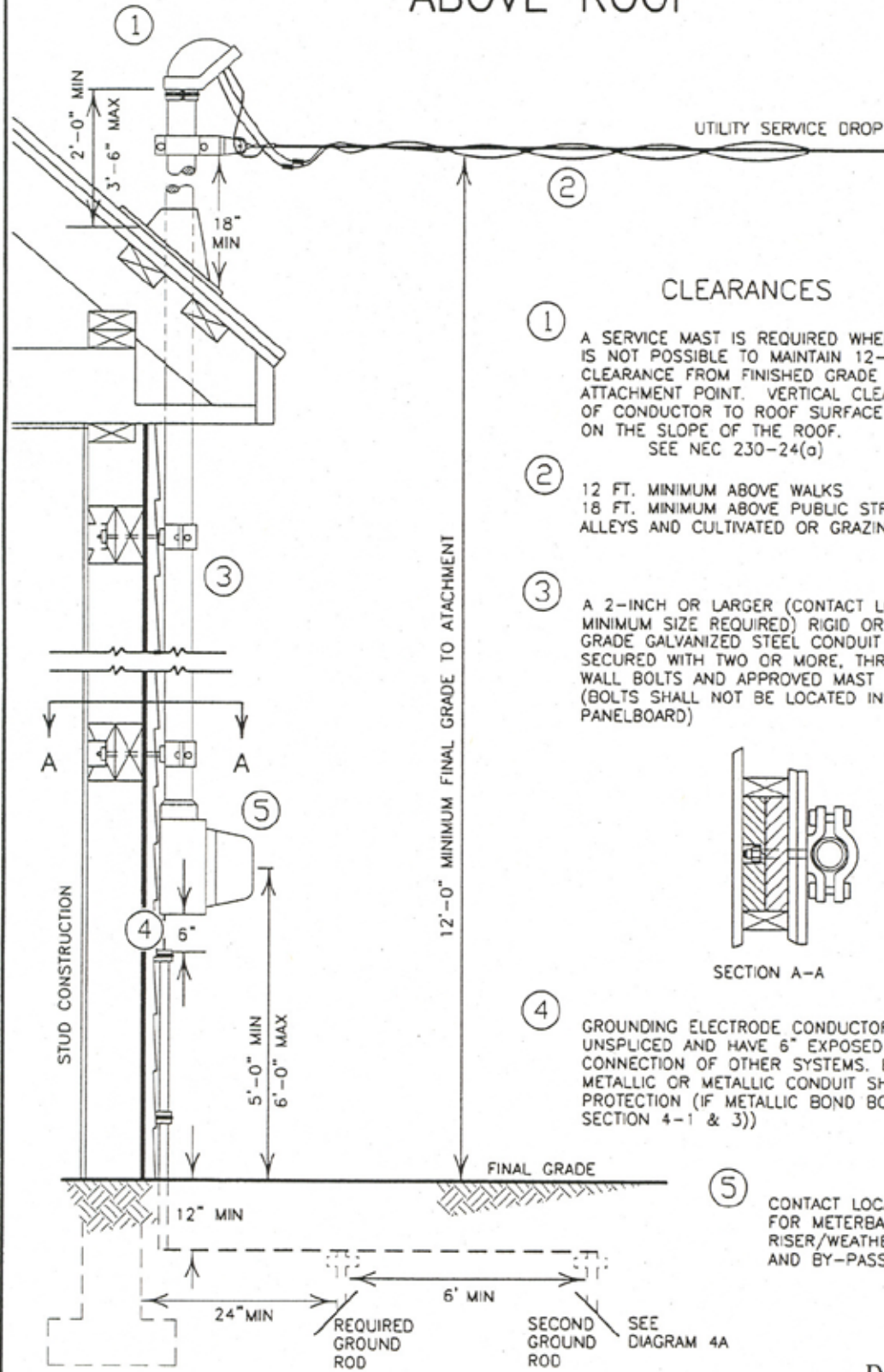
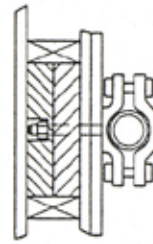


SERVICE ABOVE ROOF



CLEARANCES

- ① A SERVICE MAST IS REQUIRED WHEN IT IS NOT POSSIBLE TO MAINTAIN 12-FT. CLEARANCE FROM FINISHED GRADE TO ATTACHMENT POINT. VERTICAL CLEARANCE OF CONDUCTOR TO ROOF SURFACE DEPENDS ON THE SLOPE OF THE ROOF. SEE NEC 230-24(a)
- ② 12 FT. MINIMUM ABOVE WALKS
18 FT. MINIMUM ABOVE PUBLIC STREETS, ALLEYS AND CULTIVATED OR GRAZING AREAS.
- ③ A 2-INCH OR LARGER (CONTACT LOCAL UTILITY FOR MINIMUM SIZE REQUIRED) RIGID OR INTERMEDIATE GRADE GALVANIZED STEEL CONDUIT TO BE SECURED WITH TWO OR MORE, THROUGH-THE-WALL BOLTS AND APPROVED MAST CLAMPS. (BOLTS SHALL NOT BE LOCATED INSIDE PANELBOARD)



SECTION A-A

- ④ GROUNDING ELECTRODE CONDUCTORS SHALL BE UNSPLICED AND HAVE 6" EXPOSED FOR THE INTERCONNECTION OF OTHER SYSTEMS. ELECTRICAL NON-METALLIC OR METALLIC CONDUIT SHALL BE USED FOR PROTECTION (IF METALLIC BOND BOTH ENDS, SECTION 4-1 & 3))

- ⑤ CONTACT LOCAL UTILITY FOR METERBASE AND RISER/WEATHERHEAD LOCATION AND BY-PASS REQUIREMENT

Diagram 3-C